



169A High Street, BR6 | £325,000

02087029999

[newhomes@pedderproperty.com](mailto:newhomes@pedderproperty.com)

**pedder**  
NEW HOMES

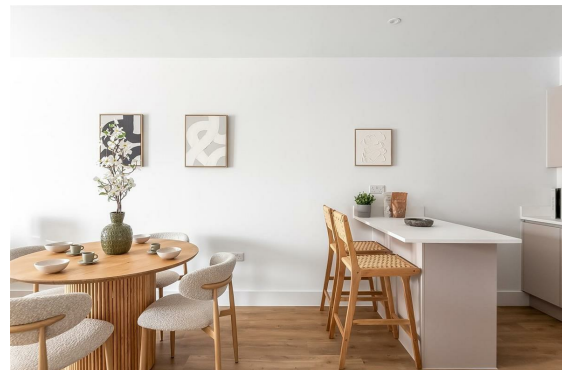


# In General

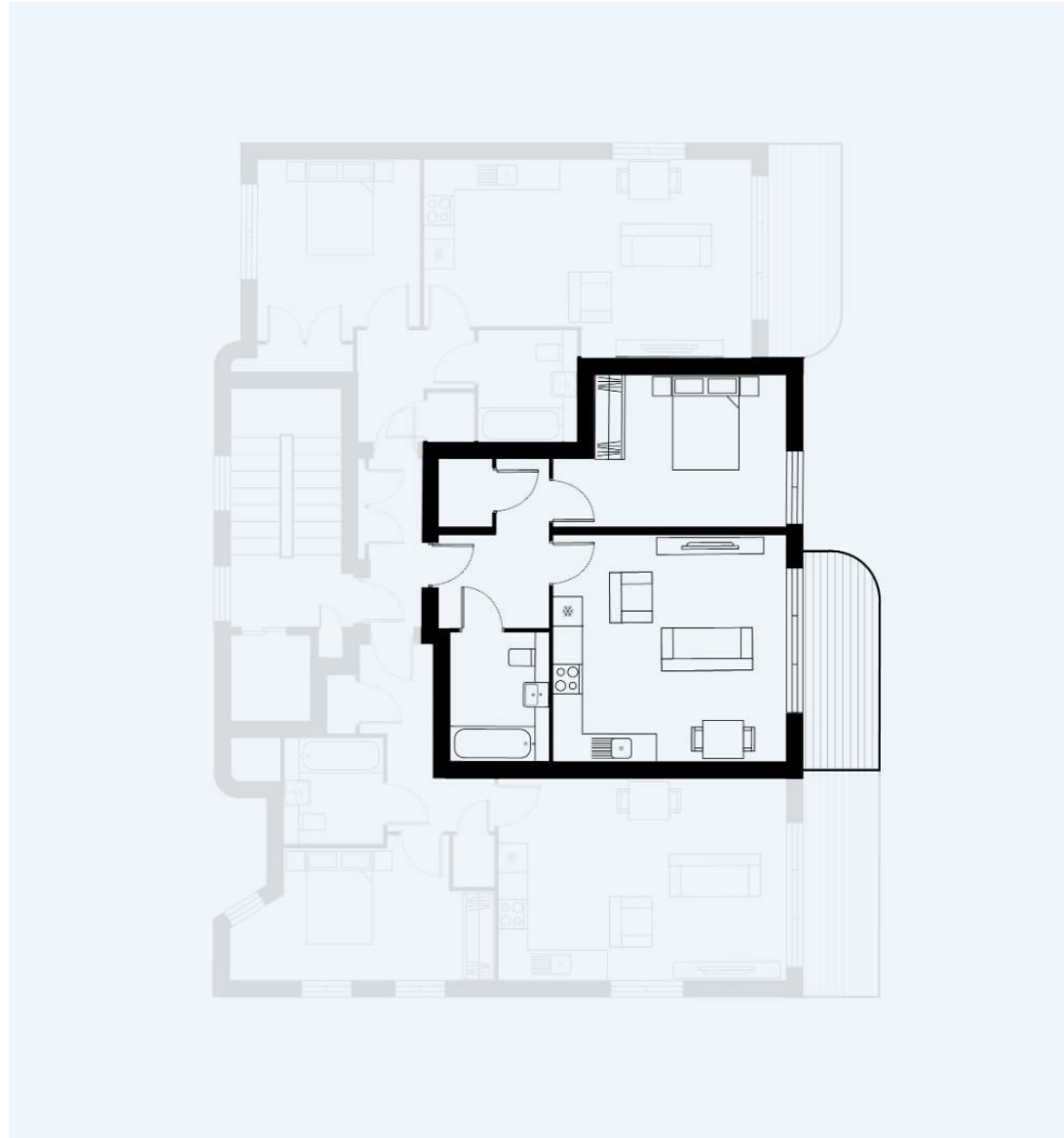
- Brand-new Development
- 534 Sq Ft
- Private Balcony
- German Kitchens with Bosch Appliances
- Communal Roof Terrace
- Secure Video Entry & Lift Access
- Excellent Transport Links
- Cycle Storage
- 999 year Lease
- Underfloor Heating

# In Detail

**\*\*Open Day - 27th June\*\*** Lumina Court is a superb collection of 15 contemporary homes perfectly positioned in the heart of Orpington



# Floorplan



Energy Efficiency Rating		Current	Potential
Very energy efficient - lower running costs			
102 plus) A			
(81-91) B			
(69-80) C			
(55-68) D			
(39-54) E			
(21-38) F			
(1-20) G			
Not energy efficient - higher running costs			
England & Wales		EU Directive 2002/91/EC	

Pedder Property Ltd trading as Pedder for themselves and for the vendor/landlord of this property whose agents they are, give notice that (1) these particulars do not constitute any part of an offer or contract, (2) all statements contained within these particulars are made without responsibility on the part of Pedder or the vendor/landlord, (3) whilst made in good faith, none of the statements contained within these particulars are to be relied upon as a statement of representation or fact, (4) any intending purchaser/tenant must satisfy him/herself by inspection or otherwise as to the correctness of each of the statements contained within these particulars, (5) the vendor/landlord does not make or give either Pedder or any person in their employment any authority to make or give representation or warranty whatsoever in relation to this property.